

Artist impression only

City Tattersalls Club is temporarily closing for Redevelopment

"An exclusive brief to Members
of the IAC Network"



CITY TATTERSALLS
GROUP



INTERNATIONAL ASSOCIATE CLUBS

City Tattersalls Club Temporary Closure - Update



We here at City Tattersalls Club are delighted to share with Members of our International Reciprocal Club Network that our iconic Pitt Street Club will shortly commence a major re-development of its Pitt Street Property delivering a brand-new Club facility across its five levels, and a multi storey tower above the club that will house a 100-room hotel and 246 residential apartments.

The redevelopment of our site, which is in partnership with ICD Property, will start at the end of May 2022 with expected completion in late 2026. After servicing Sydney and visitors from around the world for 127 years, City Tattersalls will be closing for approximately 4 years.

Despite the pressures placed on the Club by the COVID-19 Pandemic, our team spent most of 2021 acquiring and refurbishing satellite venues to ensure members and visitors can continue to enjoy the City Tatts hospitality during the redevelopment period. As of today, our team has managed to successfully deliver three alternate venues in the middle of the CBD. The Castlereagh, The Barracks and The St James are yours to enjoy when you next visit our great country.

Have a great 2022 and we look forward to visiting your Club in the near future.

Marcelo A. Veloz
Group CEO

Patrick Campion
Chairman



The Castlereagh Dining Room



The Castlereagh Sports Bar



Private Dining Room

The Castlereagh

This contemporary Club House located at 199 Castlereagh Street Sydney, was completely refurbished in 2021. The Castlereagh offers members of the International Associate Club's network access to the following great facilities:

- A state of the art Sports Bar, equipped with large multi display screens, Gaming areas and The World Gym Café and Reception at Ground Level.

- A well appointed and fun Pub Style dining facility, Cocktail Bar and verandah on level 1. Run by Celebrity Chef - Colin Fassnidge and his team and

- Two levels of World Gym Fitness facilities and squash courts on the basement levels.

<https://thecastlereaghclub.com.au/>



THE CASTLEREAGH

THE CASTLEREAGH

by fassnidge



Colin Fassnidge, Chef Cooper Nugent,
Marcelo A. Veloz, Clayton Ries



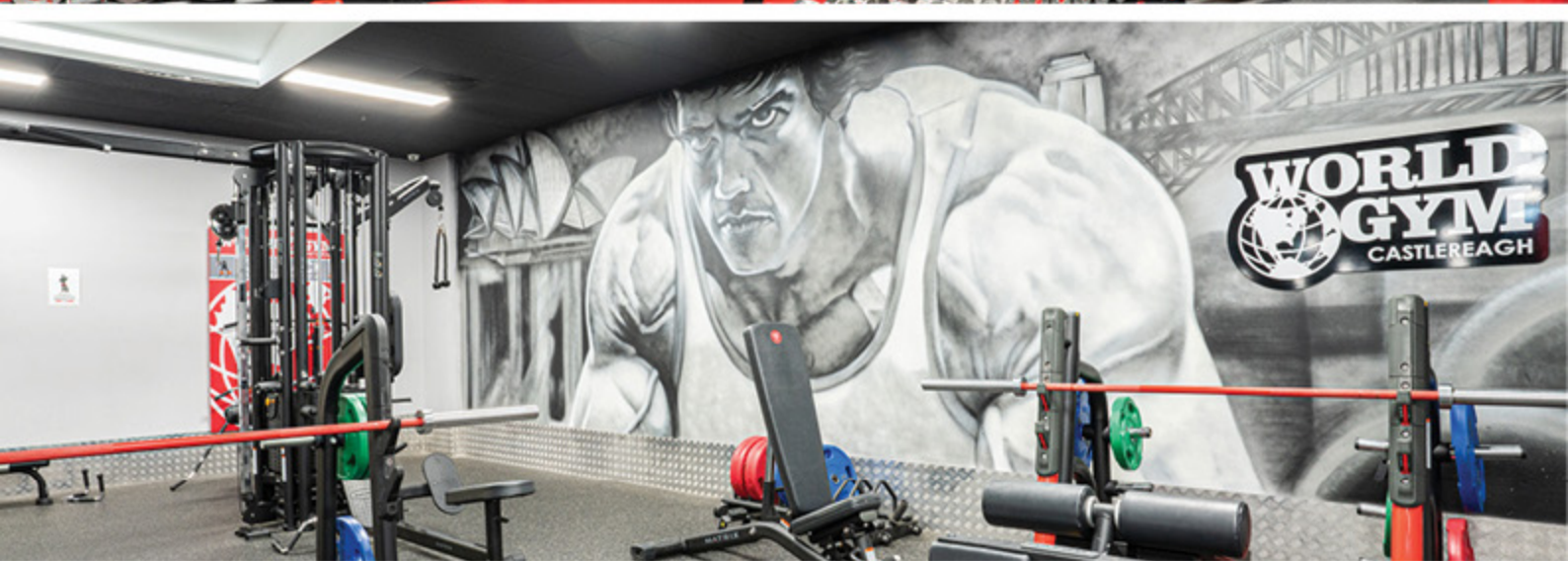
Buttermilk Chicken Schnitzel, Slaw, Mushroom Gravy, Chips



Pino's Charcuterie Selection,
Pickles, Chutney, Lavosh



Ice Cream Sandwich,
Dulce De Leche



The World Gym is a Castlereagh Club Member's facility.



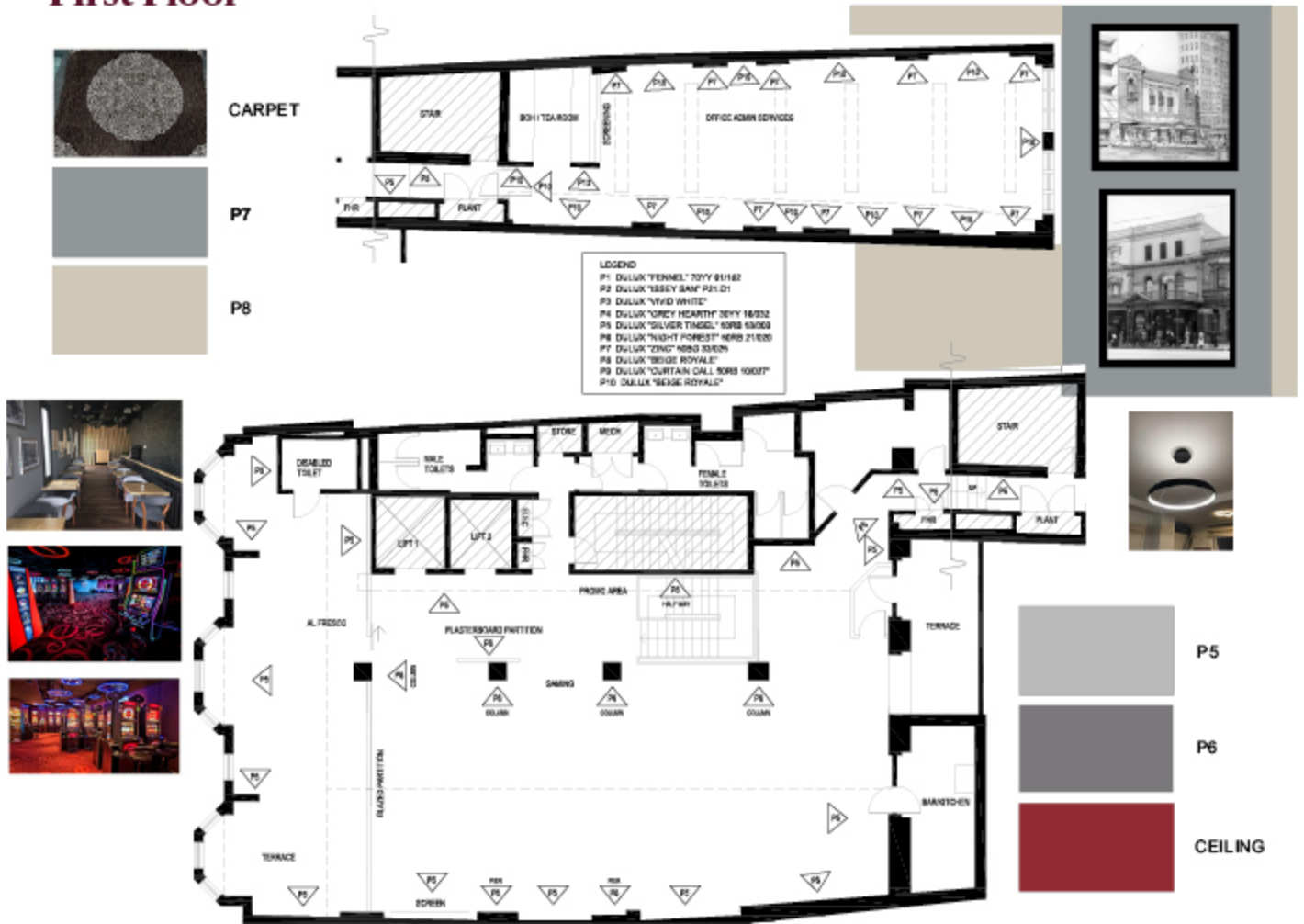
The St. James

Due for completion in late July 2022, The St. James will be the Group's latest acquisition and will be conveniently located at 114 Castlereagh Street - Just 100m away from our current premises in Pitt Street, St James Station and Hyde Park.

The St James will have a real casual feel to it, accommodating a large alfresco area on its Castlereagh street frontage and a bar and lounge at Ground level. The St James will offer Members an authentic Chinese style dining experience. A private dining and event space and a gaming area on the first floor.

<https://thestjames.com.au/>

St. James Upgrades First Floor



St. James Upgrades Basement



- LEGEND**
- P1 DULUX "FENNEL" 70YY 6118Z
 - P2 DULUX "ISSEY SAMP" P21.D1
 - P3 DULUX "VIVID WHITE"
 - P4 DULUX "GREY HEARTH" 30YY 1603Z
 - P5 DULUX "SILVER TIMBEL" 50RB 5300B
 - P6 DULUX "NIGHT FOREST" 50RB 2102B
 - P7 DULUX "ZINC" 50B0 3302S
 - P8 DULUX "BEIGE ROYALE"
 - P9 DULUX "CURTAIN CALL 50RB 10627"
 - P10 DULUX "BEIGE ROYALE"

BASEMENT



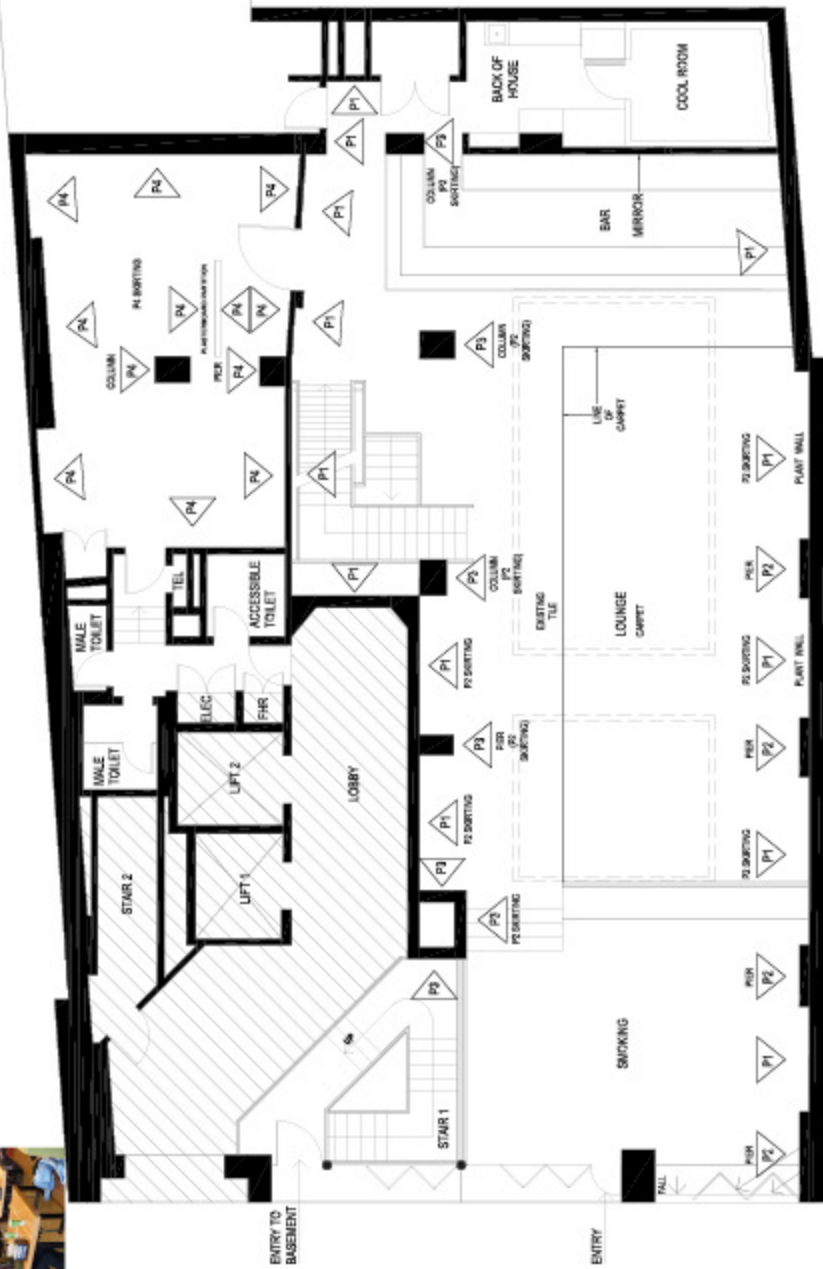
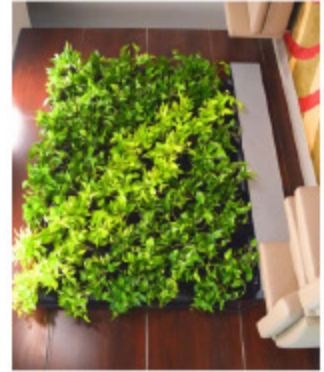
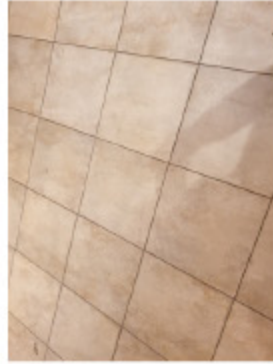
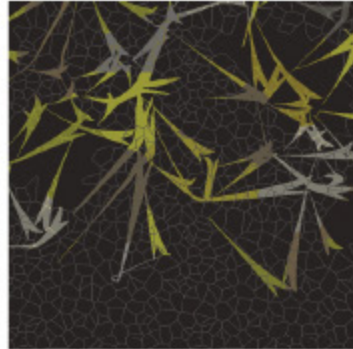
P9

P6





St. James Upgrades Ground Floor



- LEGEND**
- P1 DULUX "FENNEL" 70YY 61/162
 - P2 DULUX "ISSEY SAN" P21.D1
 - P3 DULUX "VIVID WHITE"
 - P4 DULUX "GREY HEARTH" 30YY 16/032
 - P5 DULUX "SILVER TINSEL" 60RB 63/009
 - P6 DULUX "NIGHT FOREST" 50RB 21/020
 - P7 DULUX "ZINC" 5060 33/025
 - P8 DULUX "BEIGE ROYALE"
 - P9 DULUX "CURTAIN CALL" 90R8 10/027*
 - P8 DULUX "BEIGE ROYALE"



*BFOLD WINDOWS AND LOUVERS WITH-BILL BELOW LEVEL EXISTING FLOORING

The Barracks

Located at the Northern side of the CBD, at 5-7 Barrack Street, Sydney. The Barracks, formally known as the Combined Services RSL Club, was built in 1943 to provide Service Men and Women with an entertainment facility where they could meet and socialize. In 2021, City Tattersalls Amalgamated with the Combined Services RSL Club and is committed to maintaining the traditions and facilities first envisaged by the RSL Movement of the time - albeit with new and more sophisticated twist.

The Barracks offers a great dining experience on level 1, which is open for lunch, Tuesday to Friday showcasing great Australian favorites meals. If you're ever in this end of town, drop in to The Barracks and experience "Jason's" Famous Crumbed Lamb Cutlets.

On Ground and basement level, The Barracks offers a Sports Bar and casual bistro where the Club's Fried Chicken Burger is not to be missed, when enjoying a few tunes in the basement.

<https://thebarracks.com.au/>





Ground Floor



Basement



Alfresco



Sports Bar

City Tattersalls Club

The transformation of City Tattersalls Club over the next 4 years will be unique and will reposition the Club as one of the largest integrated entertainment precincts outside of the Star Casino in Pyrmont and Crown Sydney at Barangaroo.

In late 2026 members of the International Club Associate Network will be able to access most of the facilities offered by City Tattersalls when visiting Sydney. As at May 2022 the following images provide an overview of the Club's future look & feel.



Ground Floor

A Grand Reception and an elevated Cocktail Bar and Dining Experience in the Lower Bar. Offering some of Australia's best meat and seafood produce.



Level 1

Will house a member's Café & Lounge facility facing Pitt Street. A state-of-the-art Gaming Facility along the eastern boundary of the building and what will be one of the most beautiful and highly detailed late Victorian influenced Cocktail Bar in Sydney.





Level 2

Spanning across 1,400m² of floor space, the second level will house an events center catering for both corporate and private events. The Club is currently considering incorporating a High Tea option on weekends for Members to enjoy with views along Pitt Street.

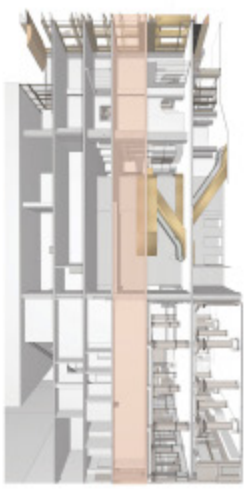
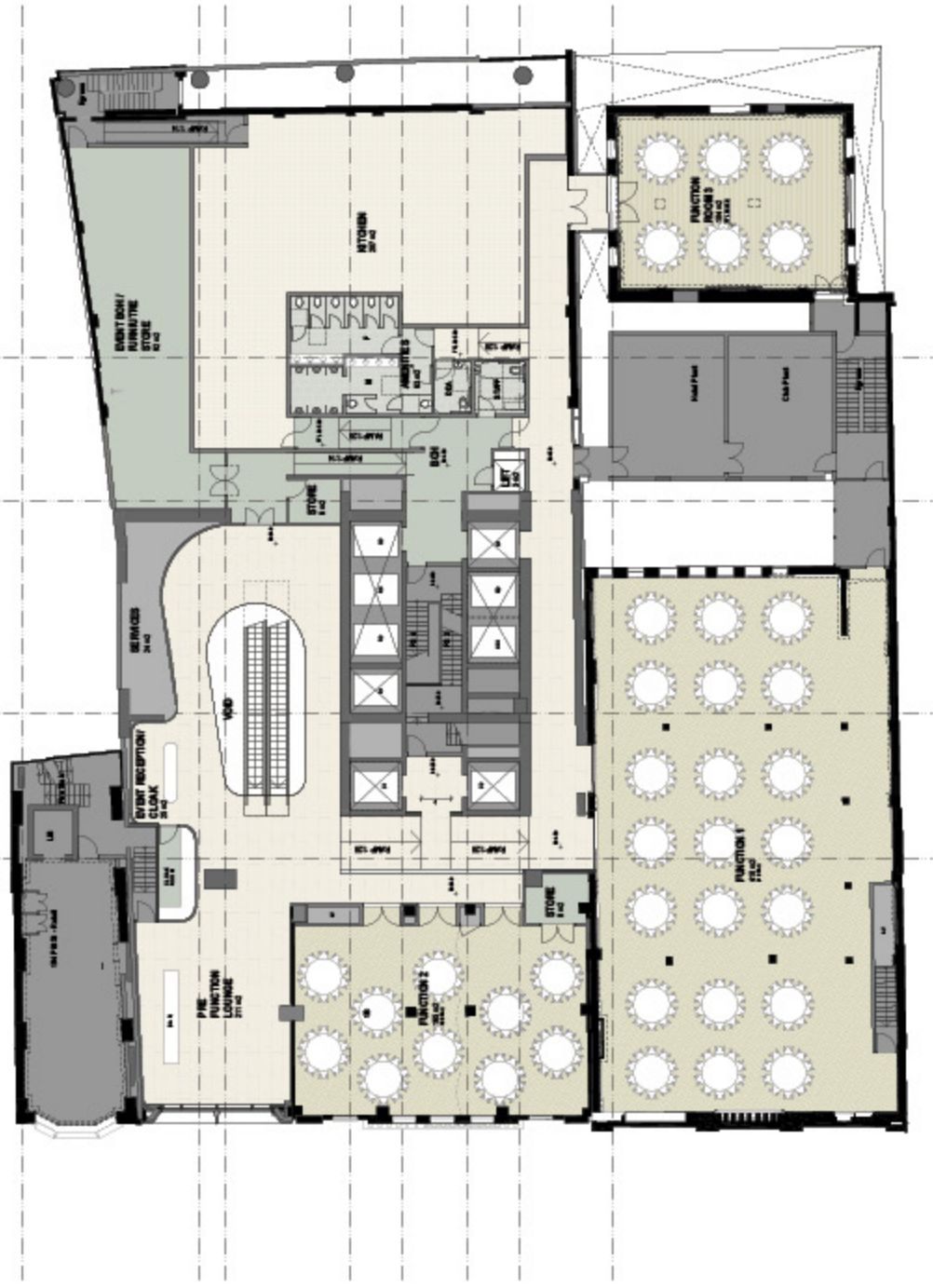


The Lantern Room

fjmtinteriors
Artist Impression only

City Tattersalls Club - Planning

Level 2 - Functions & Events



Level 3

Will be home to the now very successful, City Tattersalls Corporate Concierge Program. This "club within a club" concept will in future, also be available (via a daily fee) to visitors looking for a quiet and extremely well appointed business lounge to work from in the CBD. Access to the business lounge includes a raft of benefits, one of which is full access to our fitness facilities and day spa.

Corporate Concierge Lounge Concepts



Tea, Coffee & Snacks



A mix of semi private workstations and small meeting booths



Communal workbench



Informal meeting pods



Bar

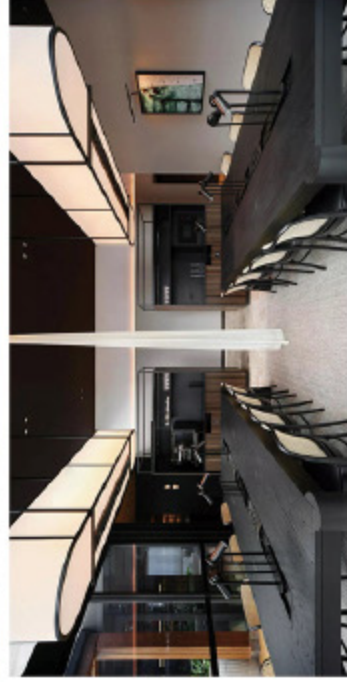
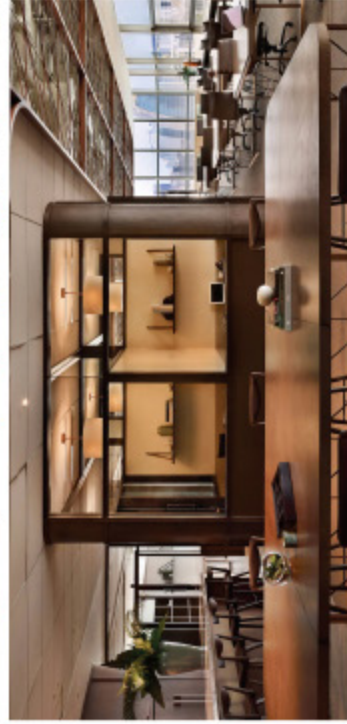


Relaxation or quite working



Corporate Business Lounge

Co-Working Space Look & Feel



Corporate Business Lounge

Lounge Bar Look & Feel



Level 4

Will offer a boutique Health and Wellbeing center, equipped with State-of-the-Art fitness facilities, mixed use studio rooms and recovery facilities in both the male and female changerooms not often found in many gyms.

Gym Studios, Functional Training & Amenities



Reformer Pilates



Cycle Studio



Yoga /Multi Purpose e Studio



Change Rooms

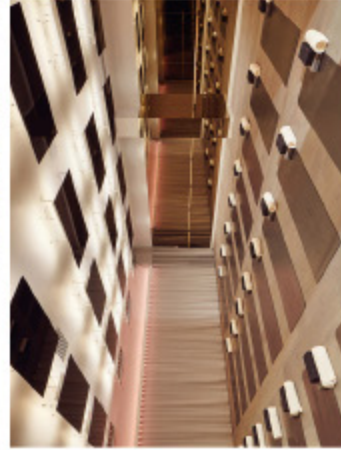


Treatment Room



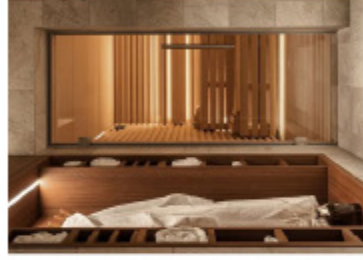
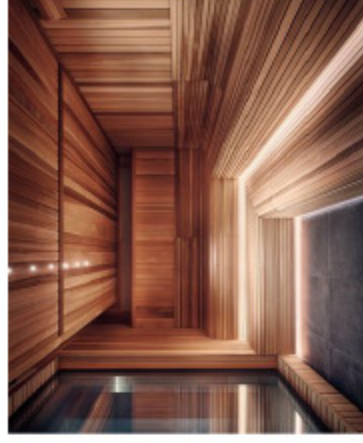
Functional Training Zone

Gym Studios & Functional Training Zones Look & Feel



Gym

Recovery and Change Rooms Look & Feel

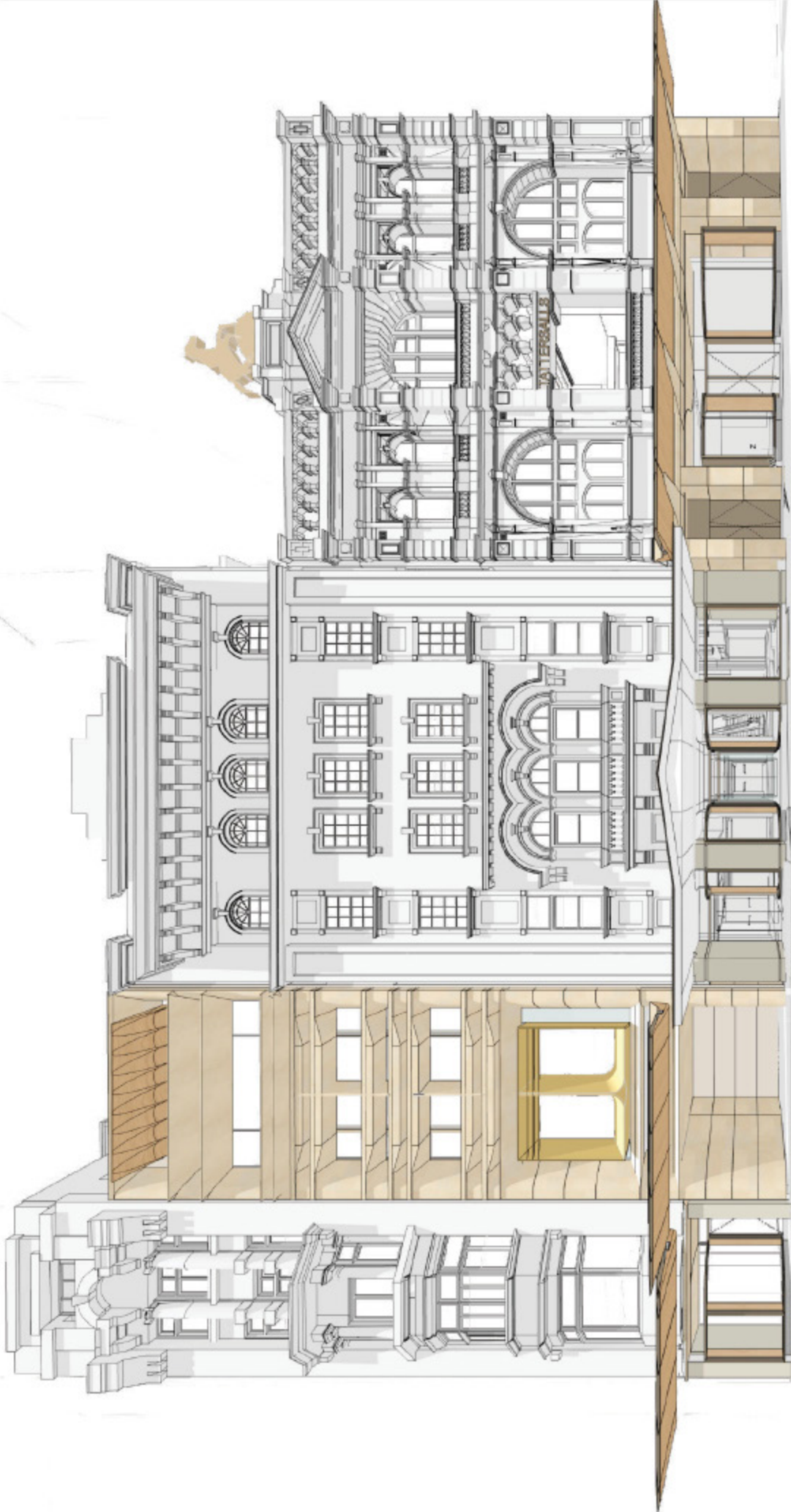


194 Pitt Street

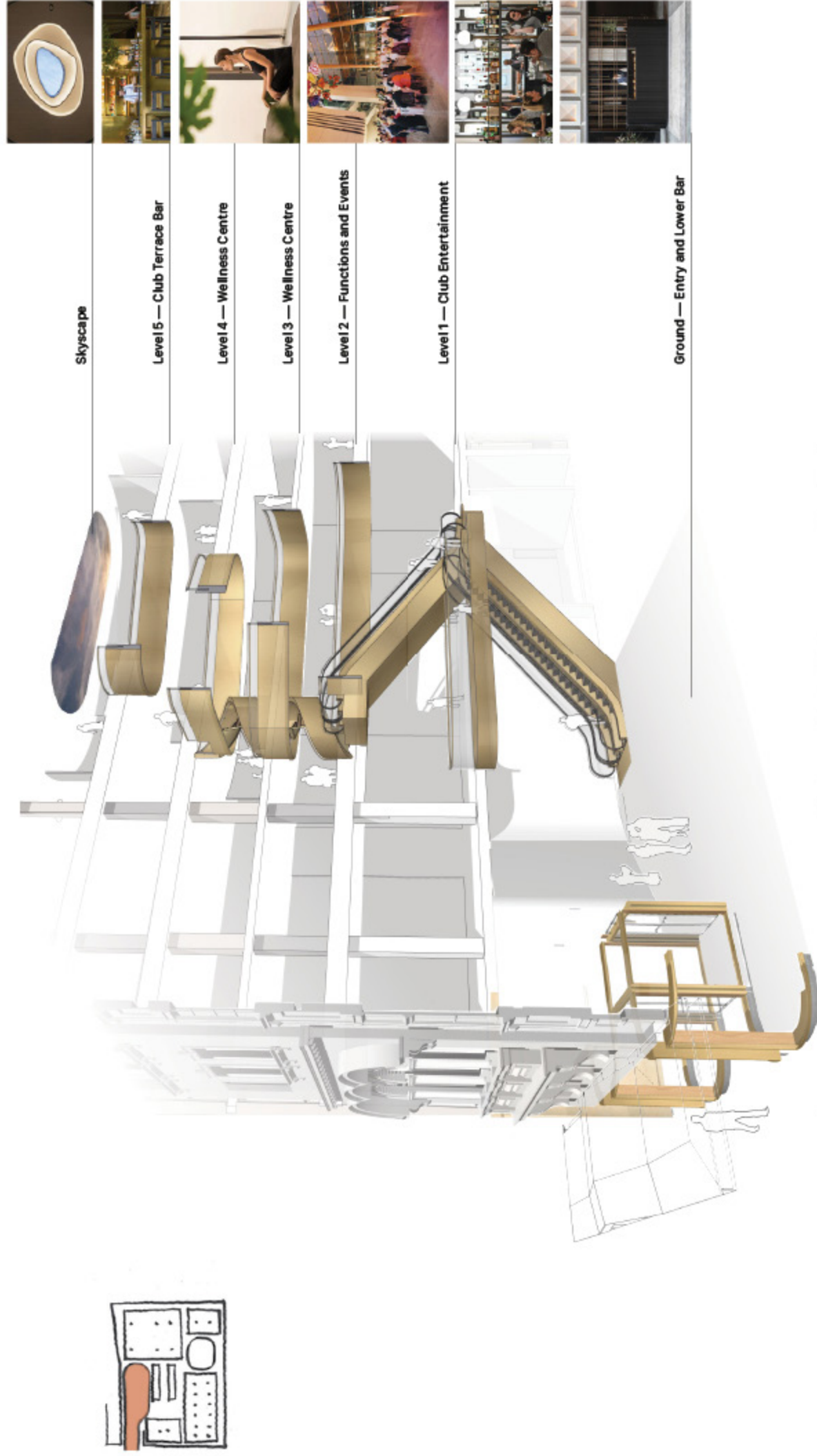
As at May 2022, it is contemplated that the entire 194 building will be leased to a retail or commercial operator as part of the Club's non core property investment portfolio.



194 -204 Pitt Street. The home of City Tattersalls

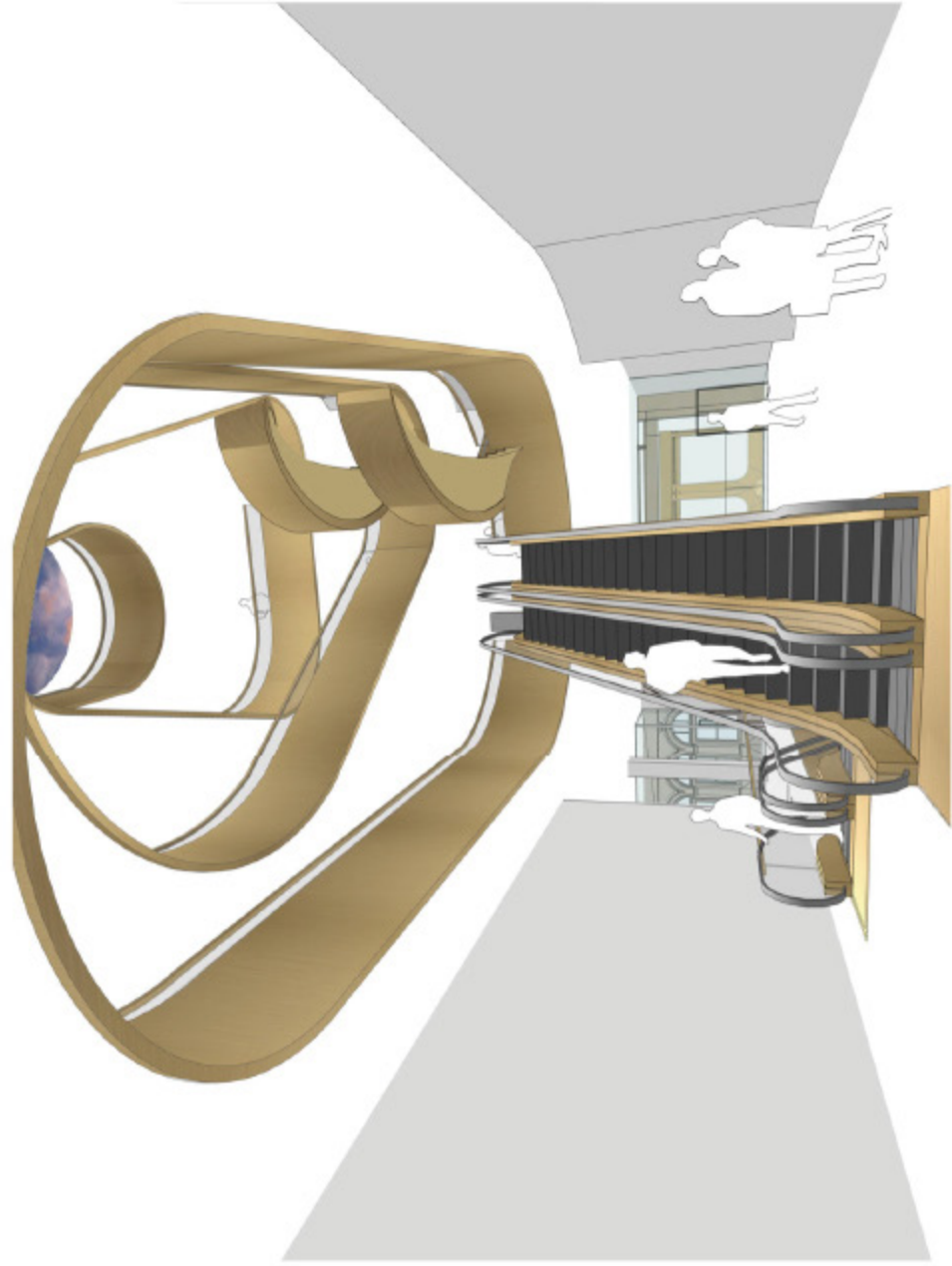


Interweave - Grand Atrium



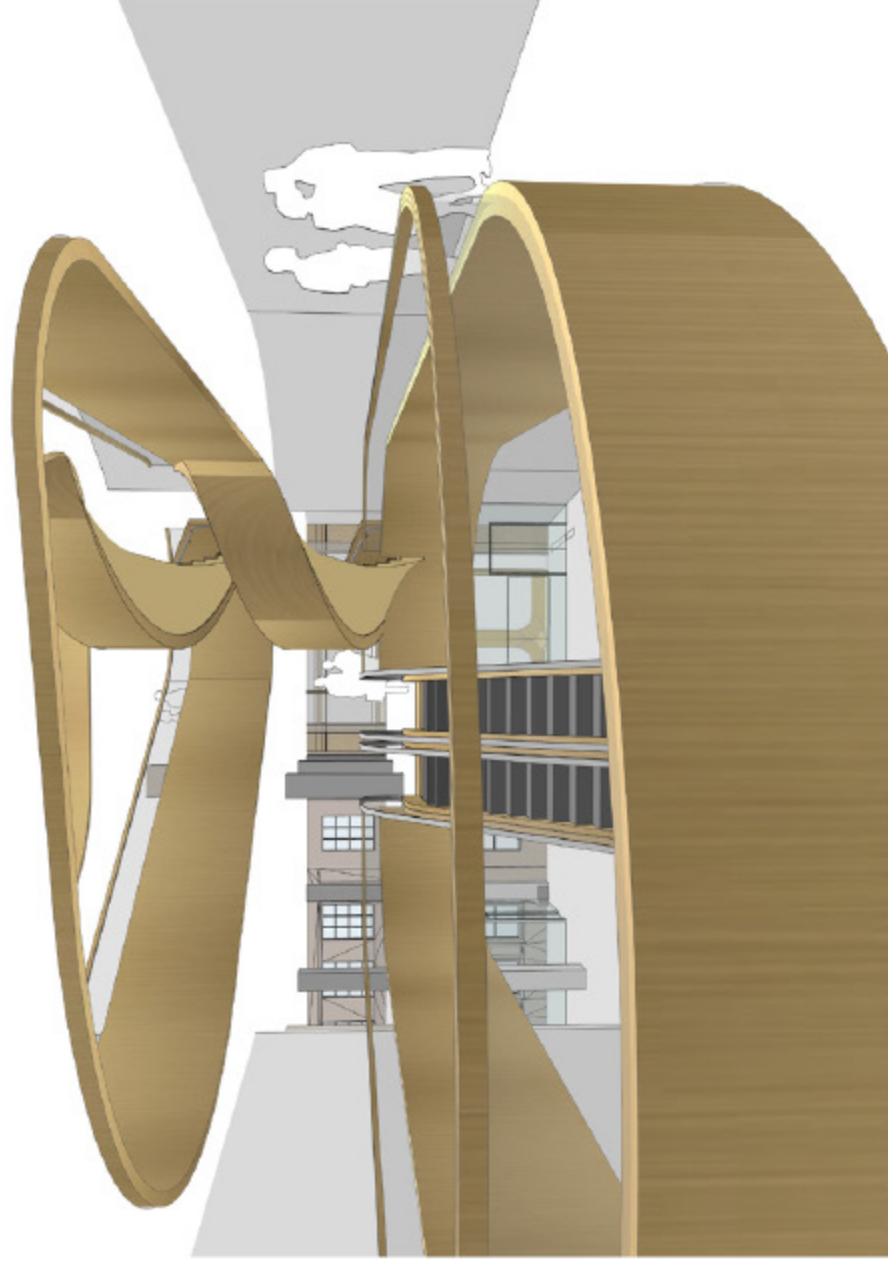
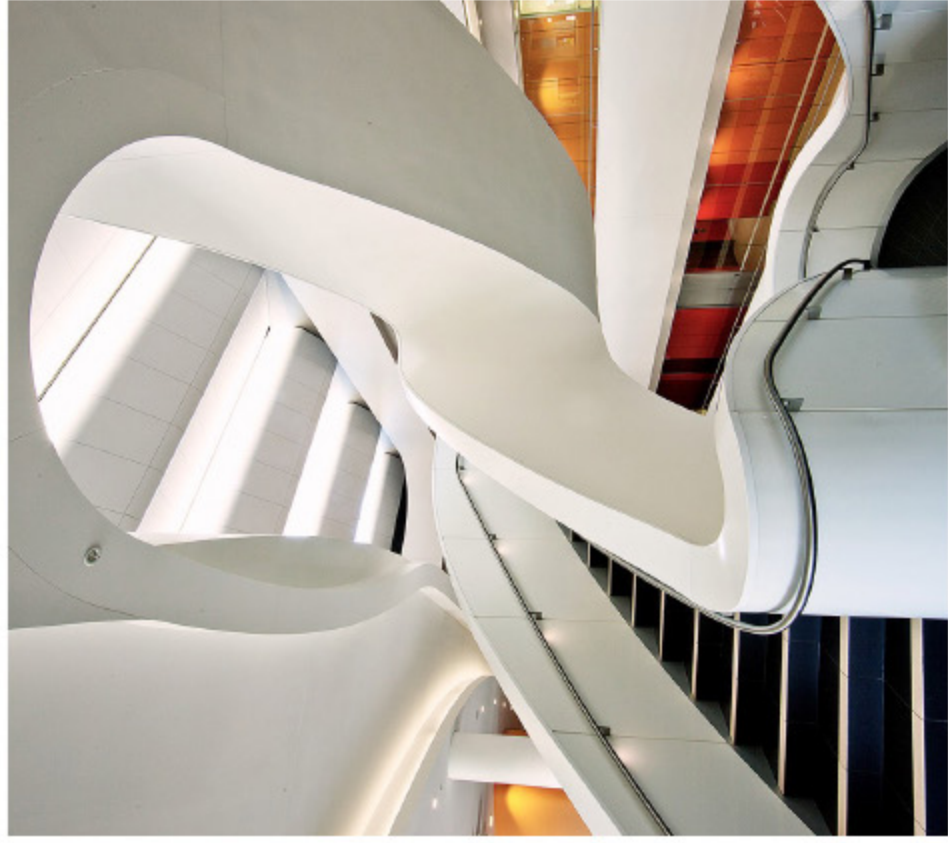
Interweave - Grand Atrium

View from Level 1



Interweave - Grand Atrium

View from Level 2





CITY TATTERSALLS GROUP



WHEN IN AUSTRALIA,
VISIT CITY TATTERSALLS GROUP,
BOONOONA SKI LODGE, PERISHER VALLEY